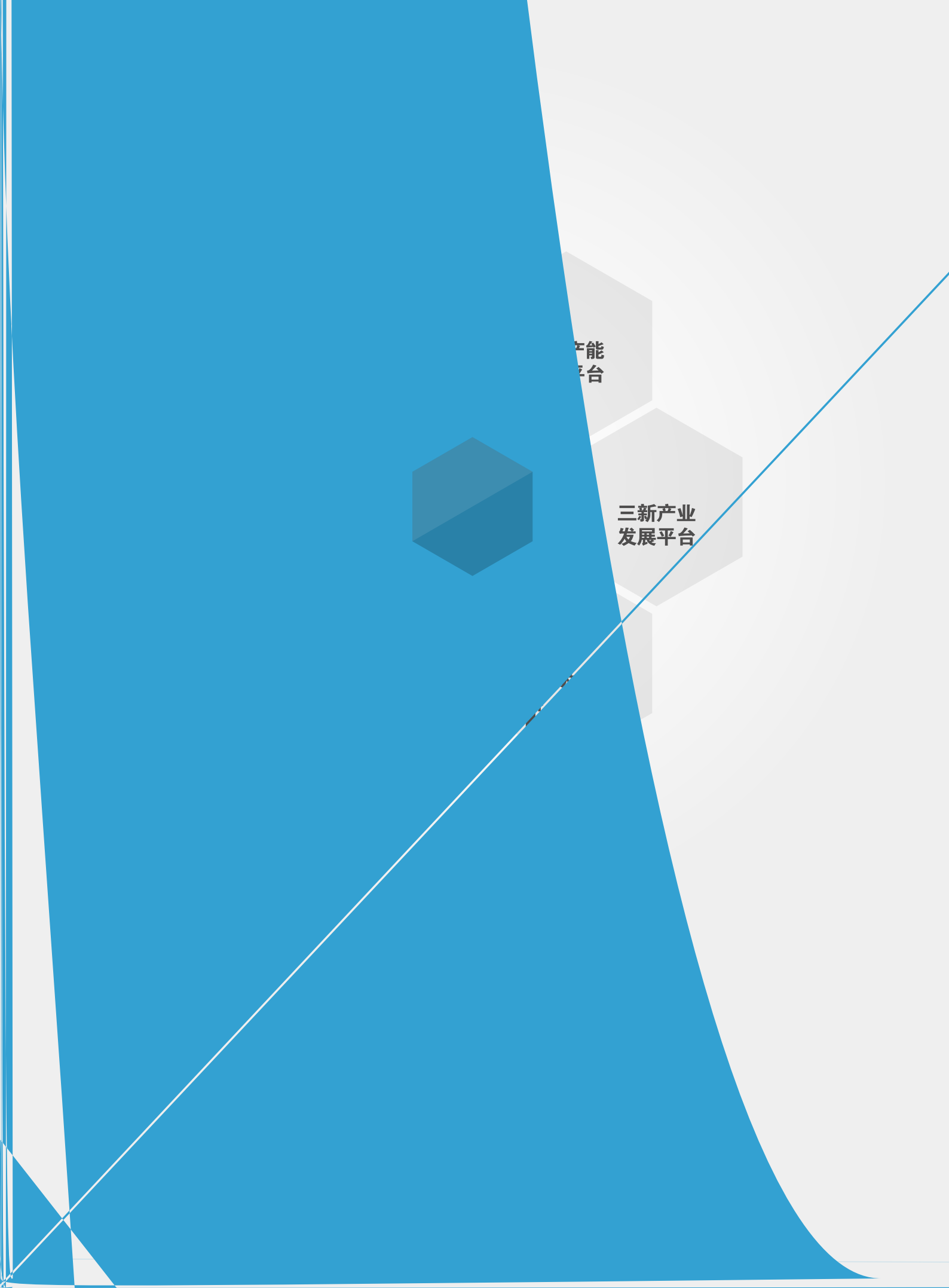


CHINA BUILDING MATERIAL MAGAZINE

# 中国建材通讯

• 2018 11 134 •





产能  
平台

三新产业  
发展平台

##

# Contents

2018 11 134



	17	1
2		
100036		
010- 68138037		
010- 68138057		4
<hr/>		
zhgjctx@126.com		5
		6
		7
10		
3000		
<hr/>		
		8
		13
		18





120  
10

SINGULUS

AVANCIS

“ ”

172

3600

“

”

“

”

“

”

11 7

8

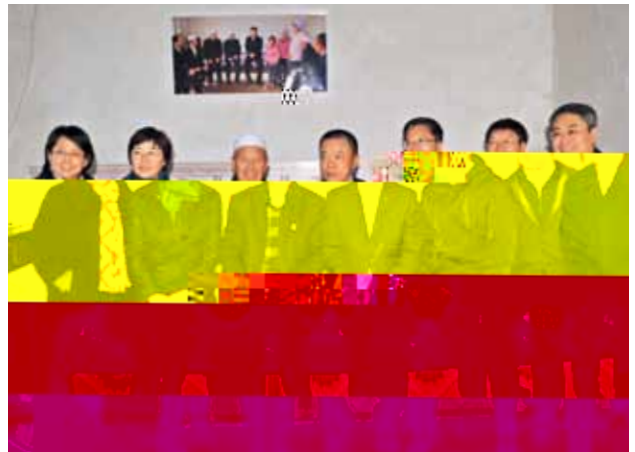
20



M w M μ w







“ ”

” “

“ ”

燦



0.12

40%

2015 3

0.2

0.12



90 TFT-LCD TFT-LCD 2010 12 29  
 4.5 0.5  
 TFT 2011 7 1 0.4

150t/d

20 70 1953  
 1995 2000

6000

6000

8

2013 9 8  
 10 0.3-1.1

0.5

2015 3 28 0.2

2016 4

2008 6

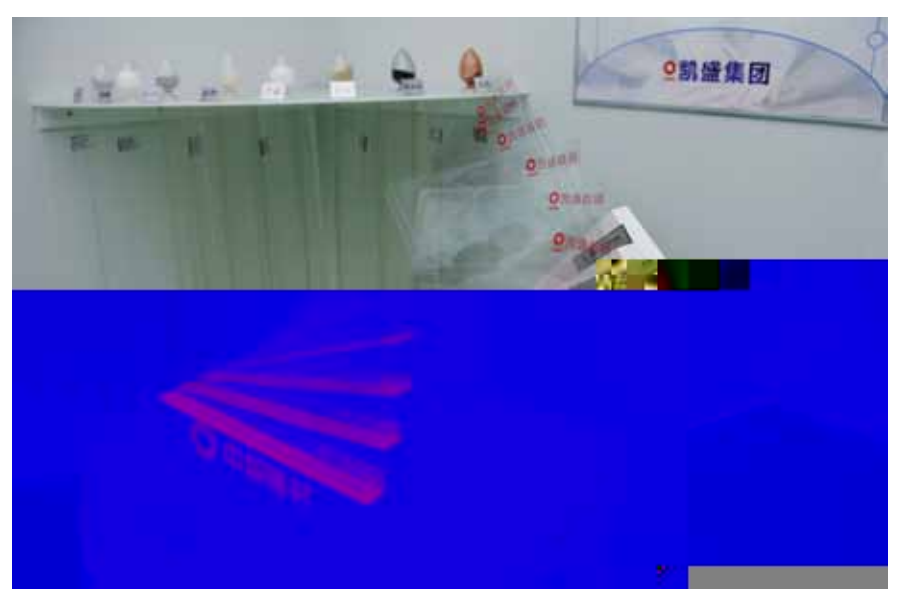
0.15

2018 4

0.12

3D

LED



0.12-0.7

0.1

4

10



0.12

2014 1

0.4

2006

5

60

2016

2016

2006

1047

30

2013

---

40



8

3

8.5 TFT



20G W



— — " "



2005

2014

20G W

Ahancis

5G W

15G W



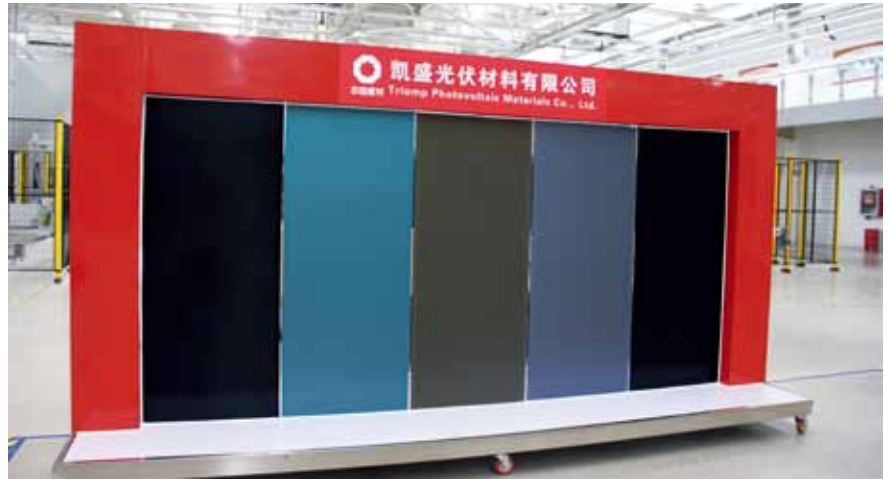
Ahancis

Ahancis

Ahancis

CIGS  
Ahancis  
4.0

100



Ahancis

Ahancis

Ahancis

2014 8 23

Ahancis

20

6

2015 10

30%

200

100

300

12

7

GW

Ahancis

5

23%

40

18%

33%

18.2%

15%

Ahancis





2009

5MW

2014 5

2011 10

1

CTF Solar

2015

2009

12

ANTEC

CTF Solar

35%

55%

10%



2017 8 16

1.2 w1.6  
30

1.92

8

FirstSolar

2.67

7w24

1.2 w1.6  
30

1.92

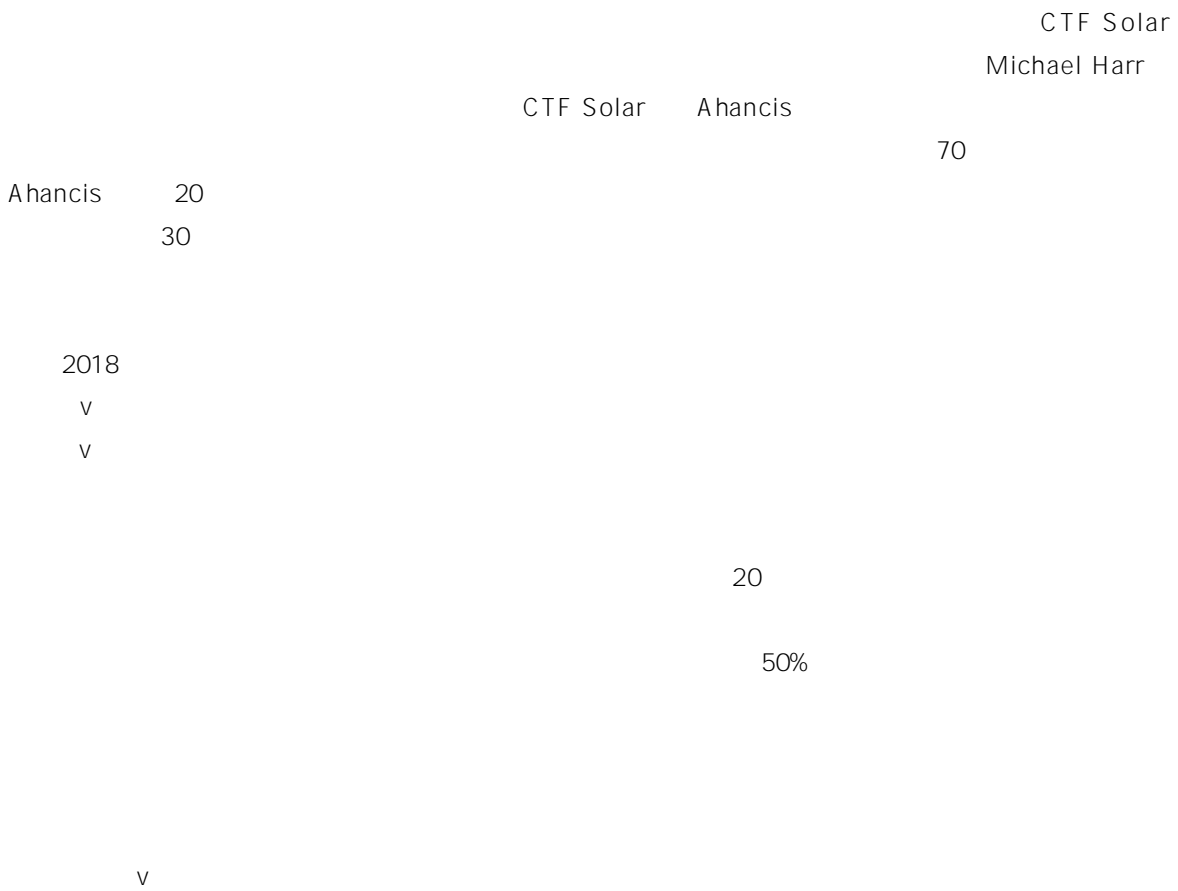
7w24

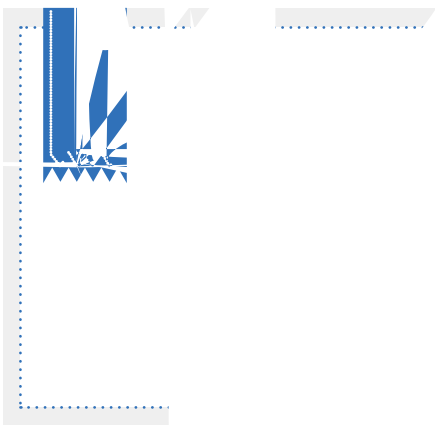
2009

2017

8

18





2.4

“

”

---



2017 8 30

2.4

10

2.4

2.4

2.4

---

2013

720

±

珺

Celgard

2010

2013 2014

1000

720

720

2015

CATL

CATL

珺

4

50

2013



10  
246

2.4

+BT

2016

映

.....

4000

2016

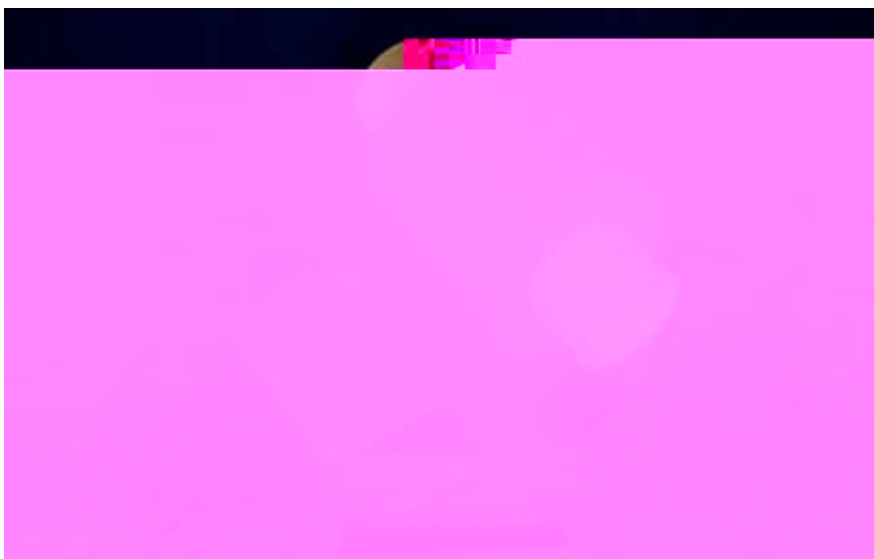
2017 8 13

24

36

2.4

200



1400

8 27

24

365

2.4



QC

QC

QC

11

A 10%  
10%  
A 80%  
90% 6  
SQE 90



2000



A

2017 8 30

2020

20

2017  
1130  
600

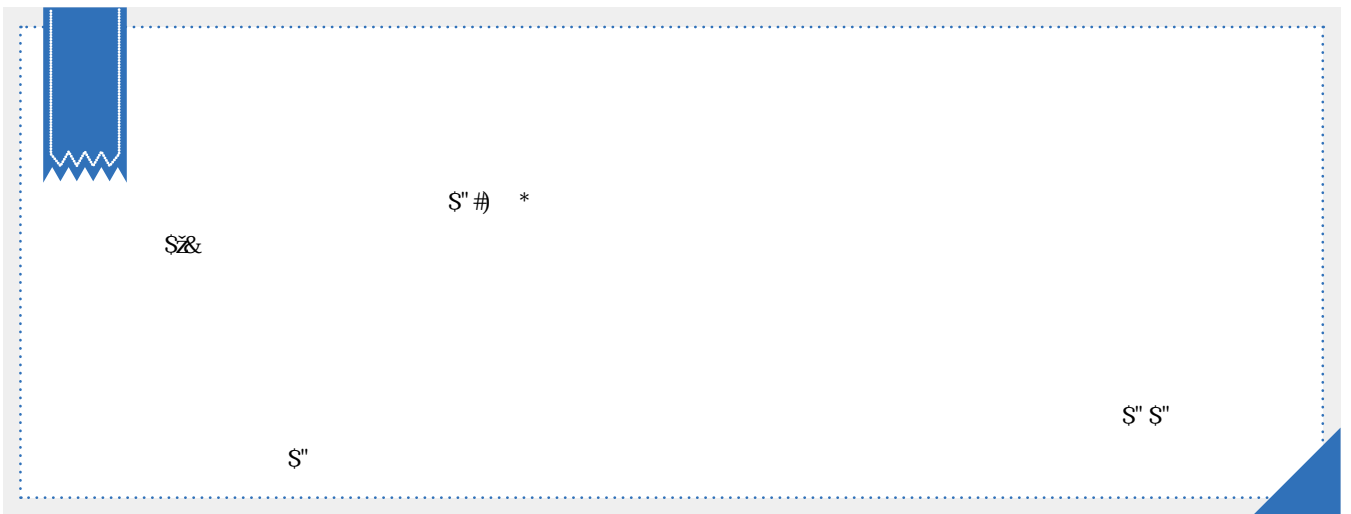
20

2011 2020

2020

BT

200 /



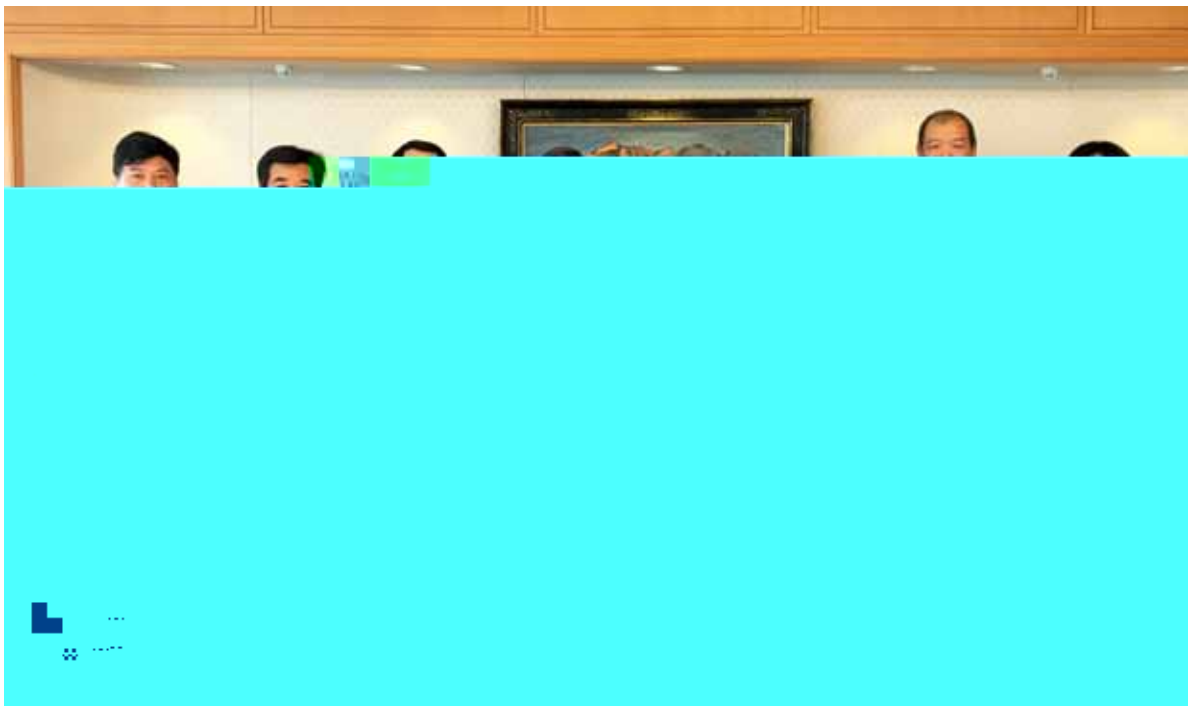


## ## #

2017  
1200

17000

20







30

“ ” “ ”

3 6 600

300

80%





7

10



- " " " " " 20
- " 500 8 40 " " " " CEO " "
- " 40 110 80 40
- " " MBA EMBA "

S' # #'

'''

%

L L

S' # &

&

%

#(

&



40

4



61

“

”

“

”

01

110



“ ”

“ 156 ”

“ ”





1950

500#

36.1

5582

1954 9



1957 9 30

2000

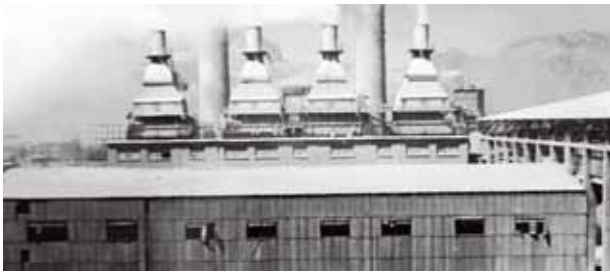
1957 12 10



1958 4

12

83.1



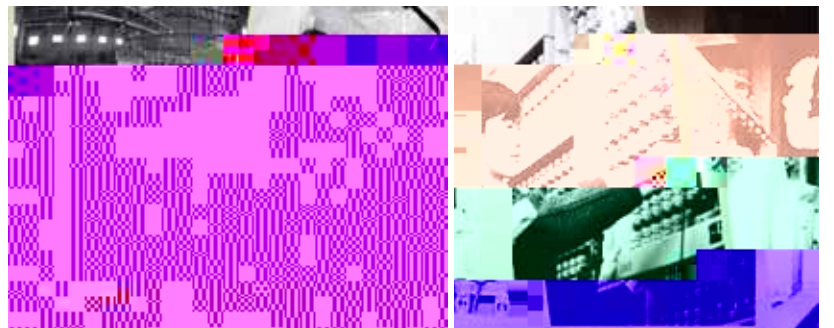
1995 10

1988 5

" "

2010 8 29

" "





2016 8 26

“ ”

.....

2018 5 22-23

“ ”



2014

2014 5

GOE Arish 2 5775

" "

2014

GOE Arish 2

2.7

5775 GOE Arish 2  
6000 GOE Beni Sgef 6

2014 7

2                    2016 8  
3                    2016  
11                    GOE Arish

GOE Arish  
2016 5

GOE Beni Sgef 6      6000

10.53  
GOE Beni Sgef  
120      Beni

1

Q E — 1

“ ”

GOE Beni Sgef

GOE Beni Sgef  
CDC  
GOE Beni Sgef  
5

2  
120  
MIS  
DCS

GOE Beni Sgef

11

9

24%

35

67%

85

GOE Beni Sgef

4

8000

220/11kV- 9j 45MVA

EPC 1+N

2018 6

14

11

GOE

Beni Sgef



1  
2  
3

100  
5- 9  
1 1- 2  
1 4  
3 50- 100  
5- 7 1 1  
3 3- 50  
3- 5 1  
3



2 16  
4 1 1

" "



1

1

32

56

1

1

4

2

1

1

"

"



"

"

2

8

1

1

1

1

1-2

1

"

"

1

1

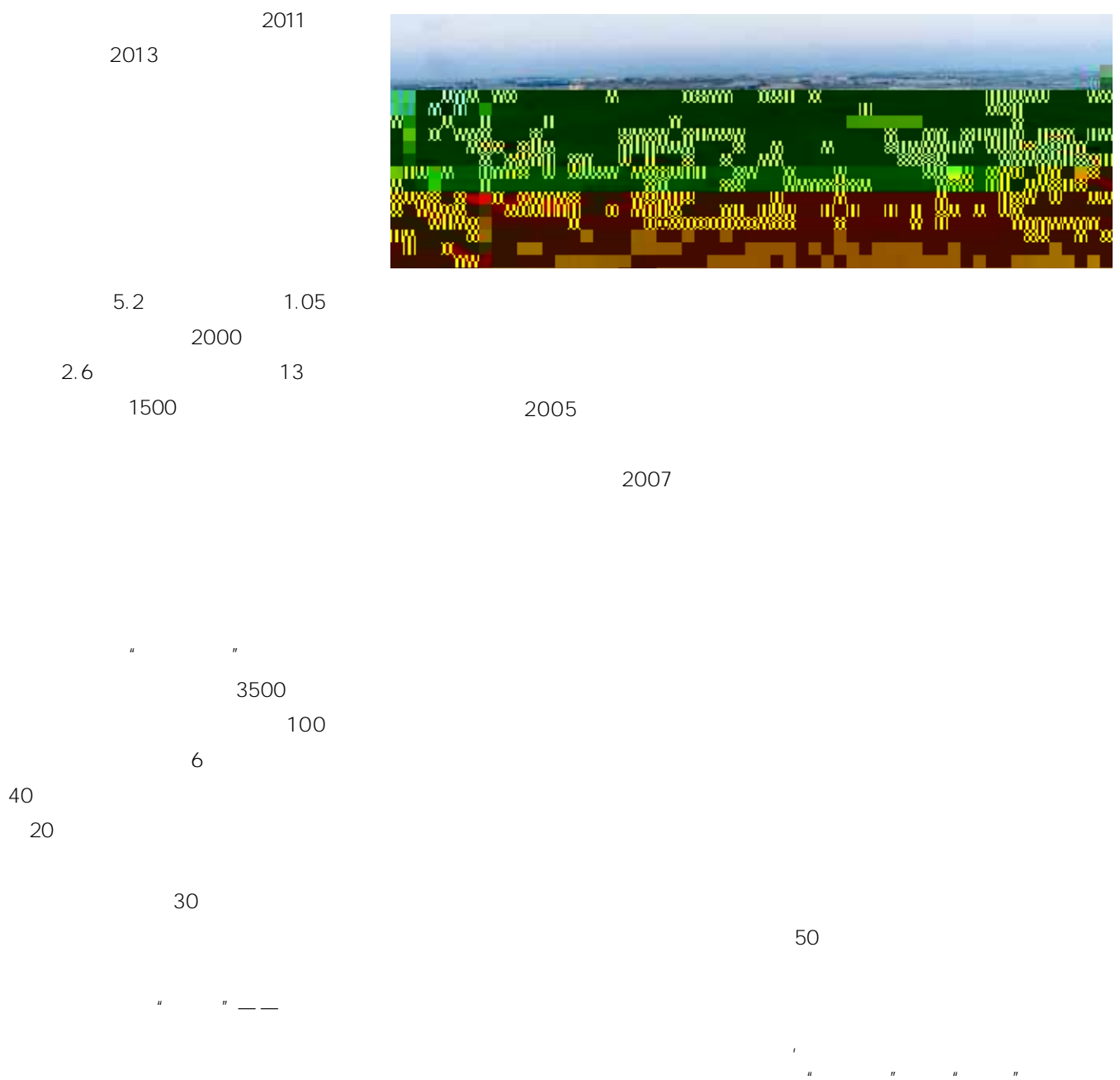
"

"

1



— —





5 16  
50

40

90

Marina  
380

300

2008



15

2011

2011

2013

“

”

.....

2015

G

V

11

2016

11

11

11

80%  
50%

2007

11



//

//

— —

) #

%

%

\*) (

&

3333

#

#

3333

\$

£

\* &



S'''

#%

#/%%

(,%'

),%'

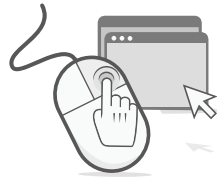
#',%'

#),%'

),&

S& \*'

#S,""



01

1

03

" "

CEO

02

48

04

" 19  
"







\*%

+

S"

\$ / fi

\*%

%

#% # )



