



11

” 2 “ ” 1 2 3 “

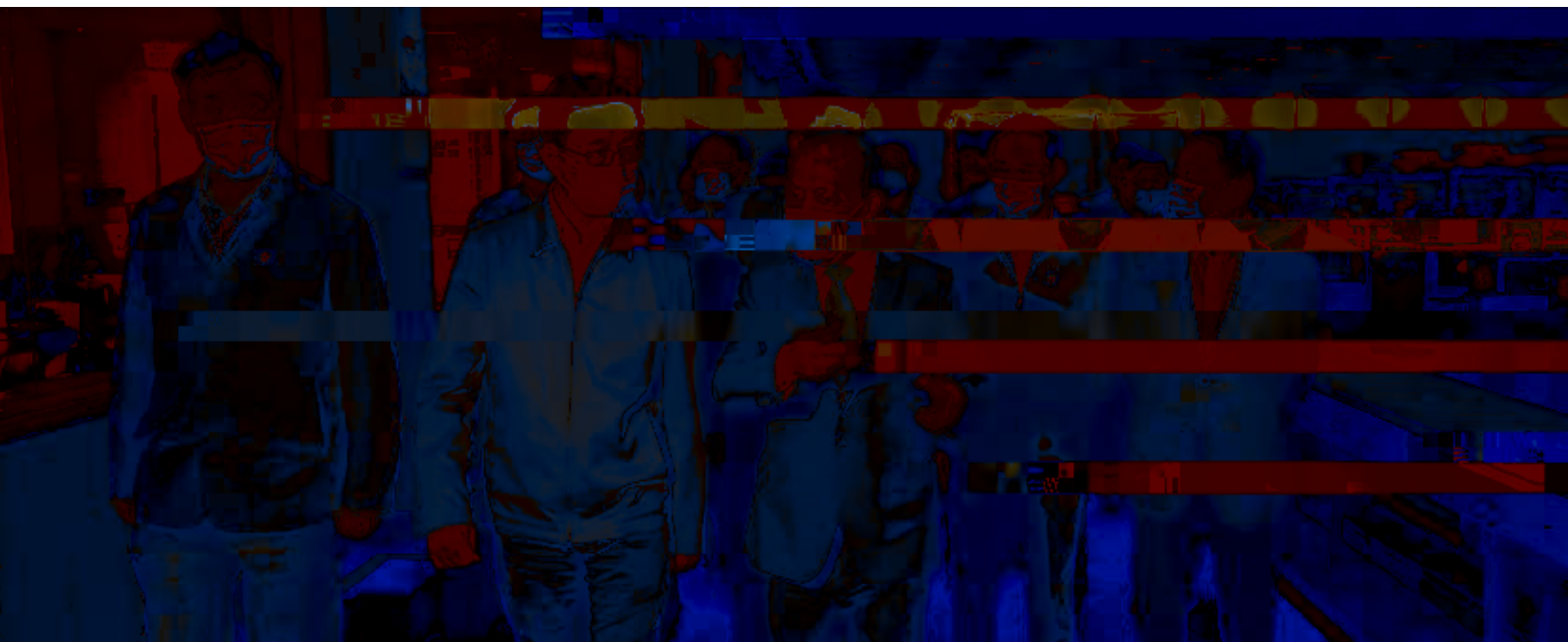
70

Contents 目录

2020

10-12

157-159



1

4

5

6

7

8

9

10

11

12

13

14

15

1

2

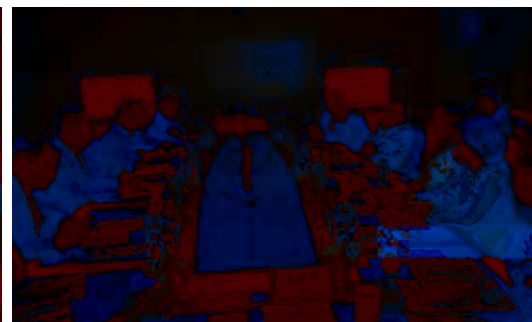
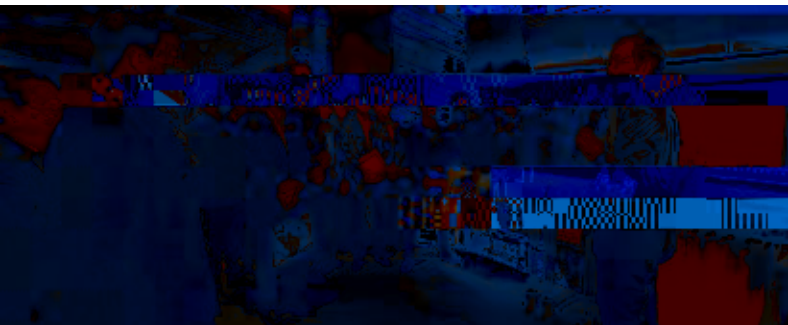
"

"

16

21





24



70

44

28



47



34

"

"

50

37

49



39



52



42



54

" 2020

500 "

12

56

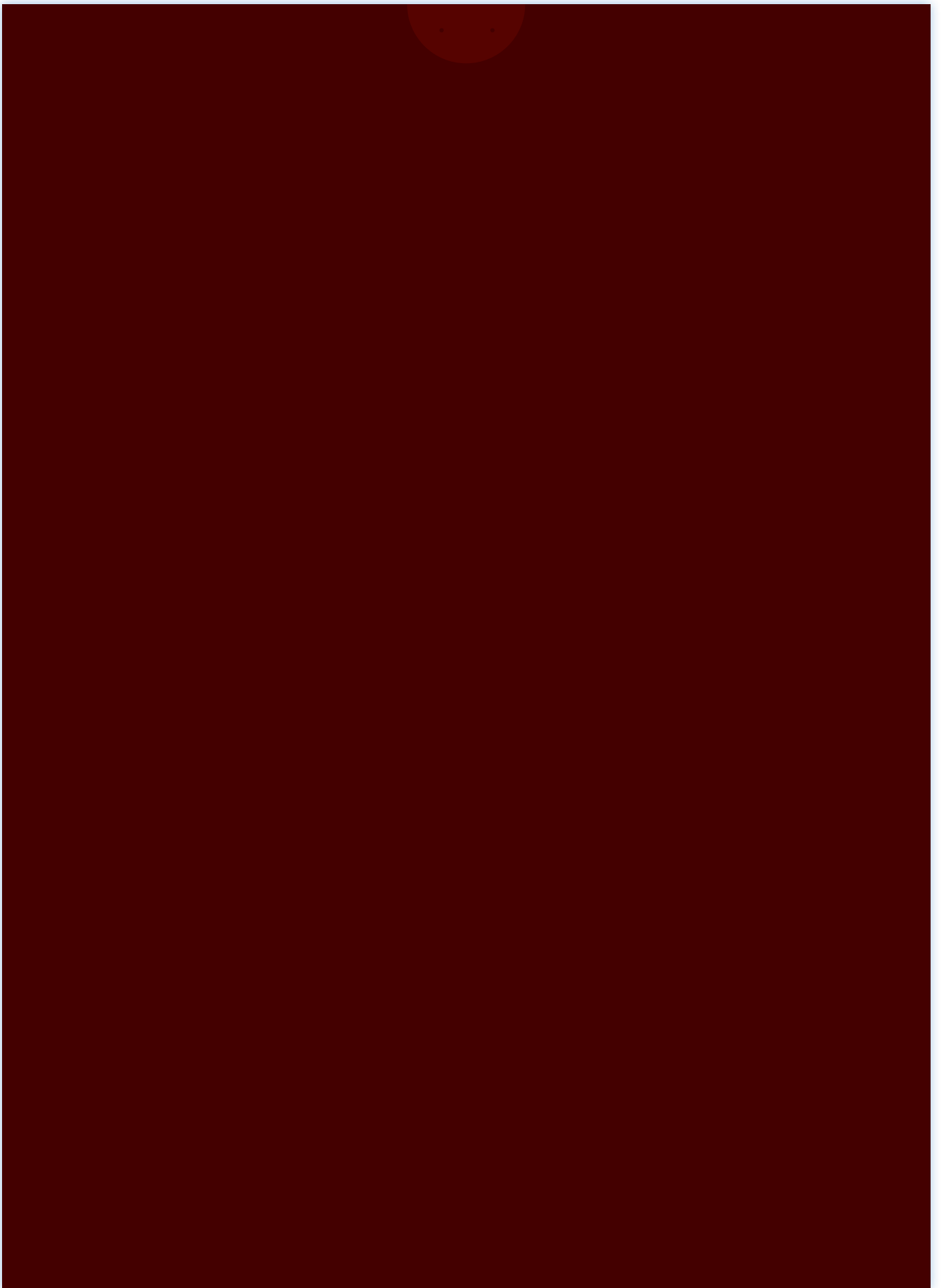


%

%

1++%

S000





B

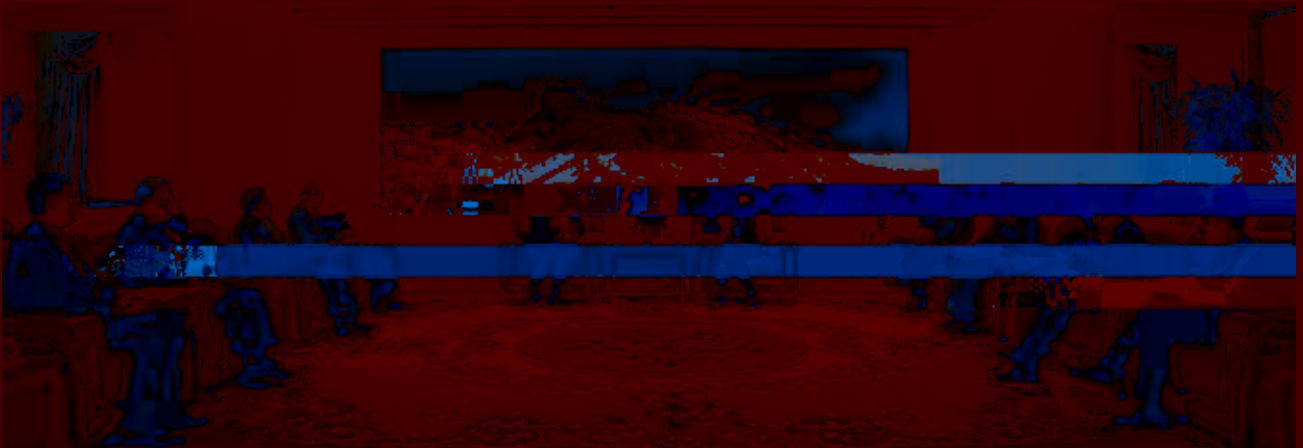






SO/O

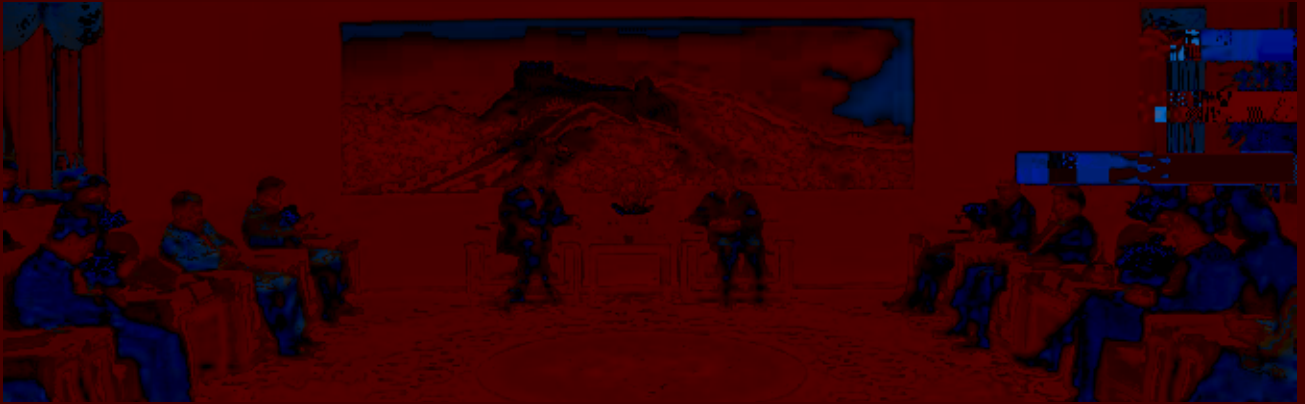
SO/O





(+0

88%



+





SOSO

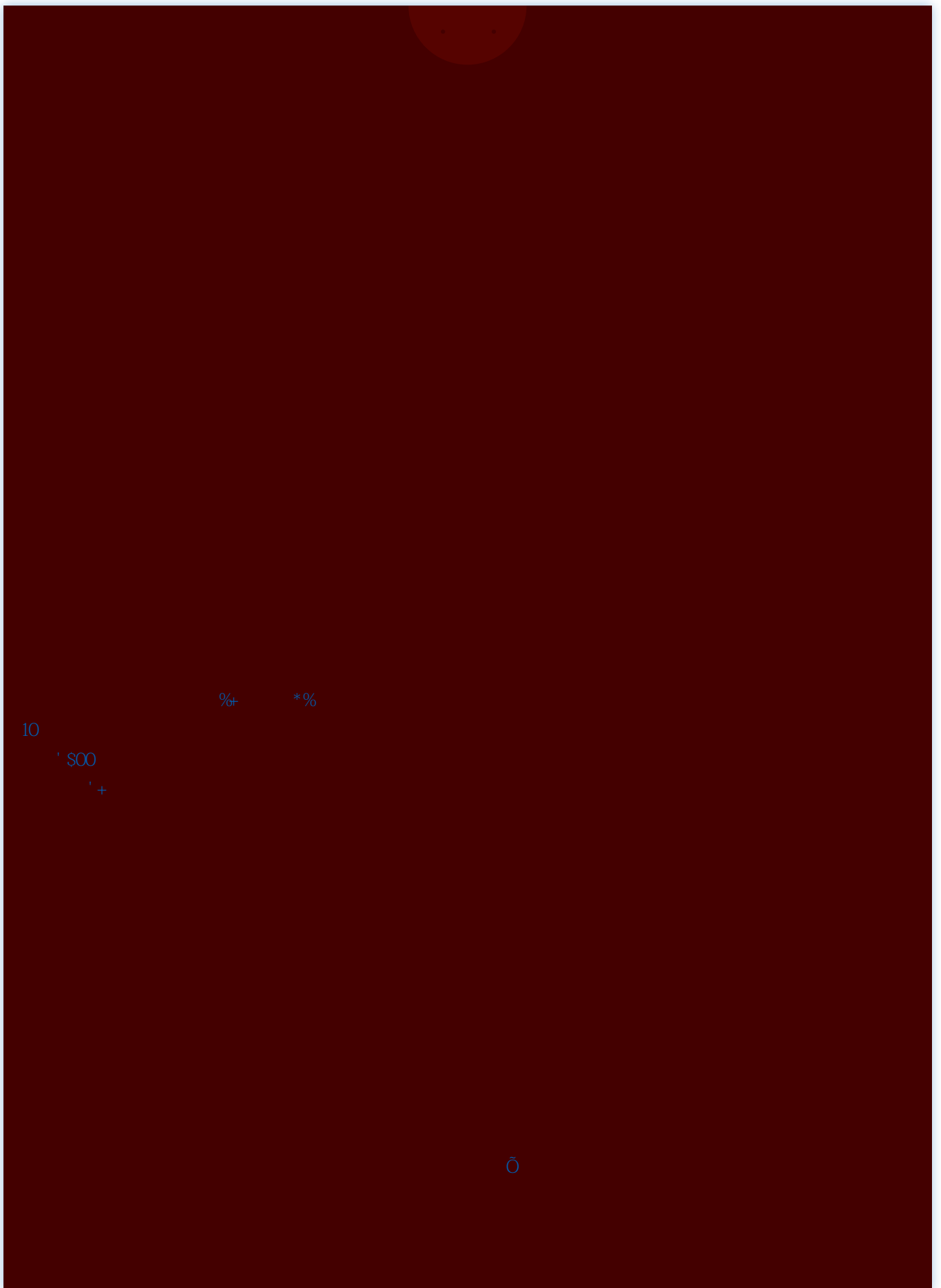
68+% ' +. (/ (& E[` a_ S&O. S/%) .' / &*

E[` a_ S' +. (4 S01*

G6



4; ?
4; ?
4; ?



2035

" "

" "

7

" "



"

" "

"

"

2035

"

" " " " "

" "

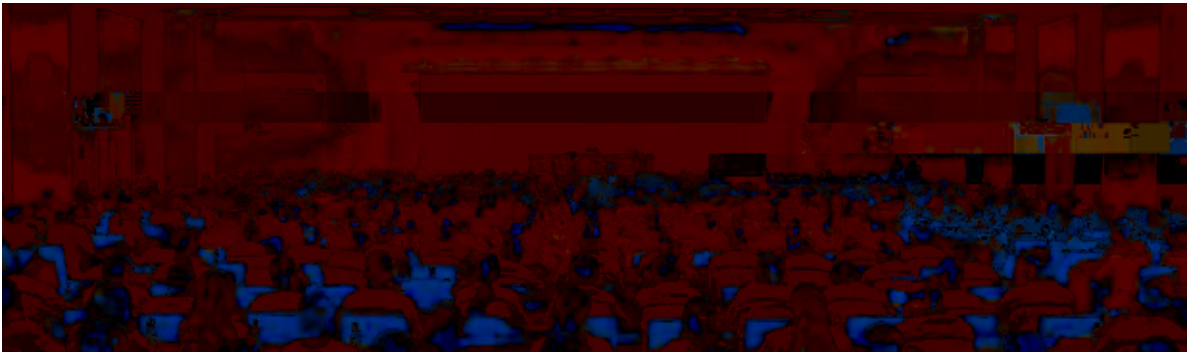
38

83

5000

10

" "

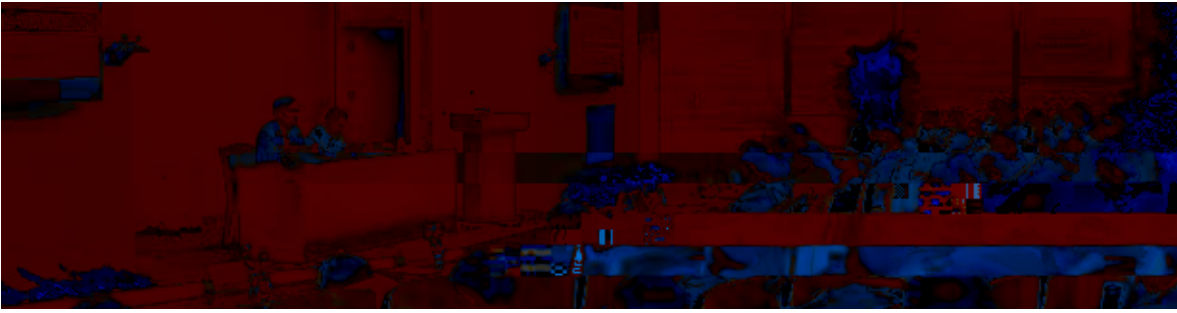


3032 186



11

" "



“ ”
“ ”

“ ”

“ ” 2035



知(2013)

)"



70

1954 5 4

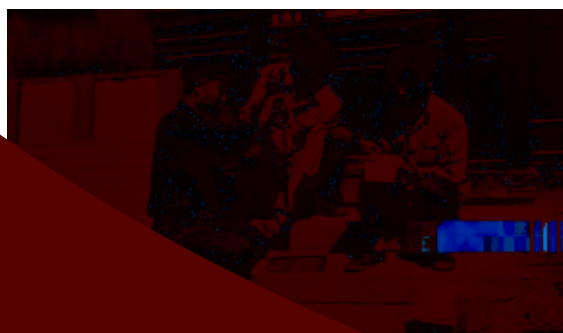
70

1988 1

"

D

"



1960

1999 7 1 — 60 0
2004
2006
2017 " "
1958 1957
" "
" 0 1" —
KO

310A D

" "

70

" "

5000

"

"

"

"

"

"

"

"

"

"

70

16 23

" "

5
CMA

12
I

3

52%

24%

2

" "

" "

"



#ž

"

" — —

80%

2008

"

"

"

" — —

%ž

2019

2014

\$ž

5

60

20

12

13

6

"

"

"

"

"

"

"

" — —

" "

" "

" "



#ž

" "

" "

2 2

" 6 2015

" "

2015 7

" " %ž

\$ž

" "

27

2019 " " 2019 33 2020

2019 "

" "

" 22

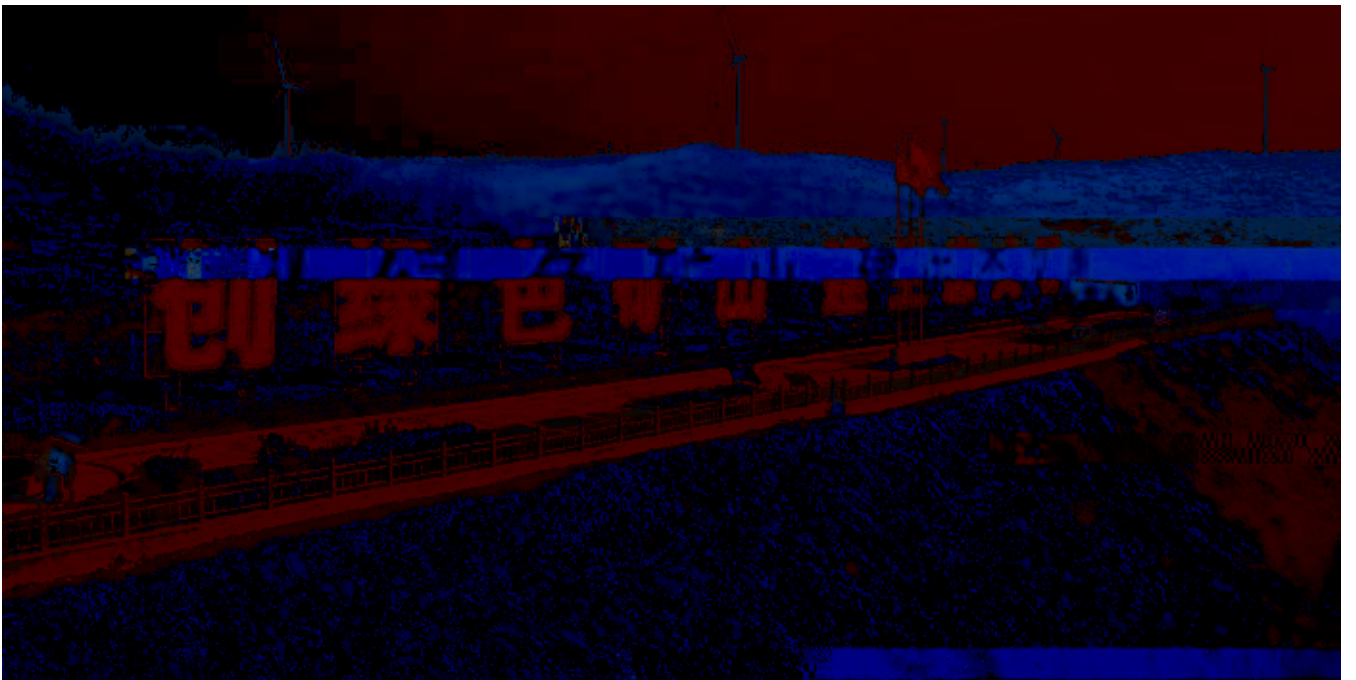
2018- 2020

1.2

&ž

" "





40

2019



#Z

"

"

"

"

"

"

"

"

"

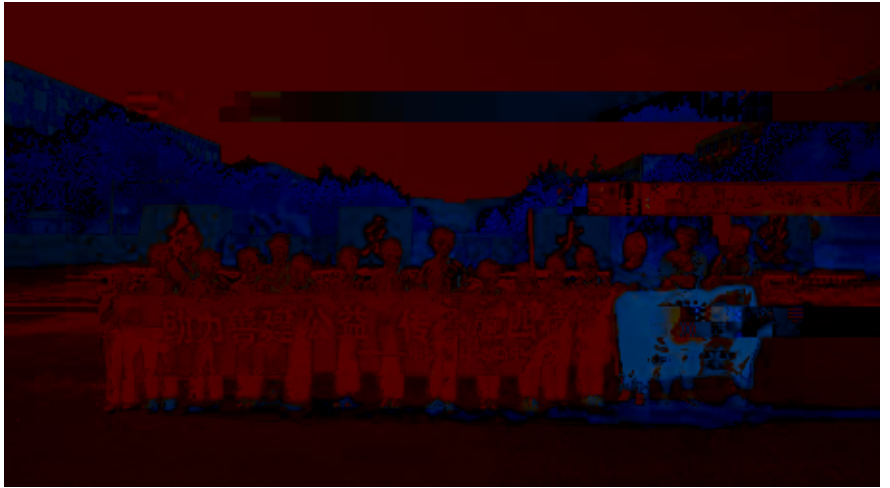
"

"

"

\$Z

18
%



“ ”
“ ”

“ ” “ ”
“ ” “ ”
“ ” “ ”

70

7

2019



“ ” 2035

“

“

%ž

"

" 20

OA

#ž

(ž

" " " "

&ž

" "

\$ž

"

"

KPI

100

' ž

OA

#ž

%ž

5

\$ž

" "

&ž

" "

KPI

"

%ž

"

#ž

' ž

OA

&ž

" "

\$ž

36



" 100 100 "

6 "

"

"



“

”

“ +N”

KPI

“ +N”

”

”

25 KPI

“ ”

”

2019

“ ”

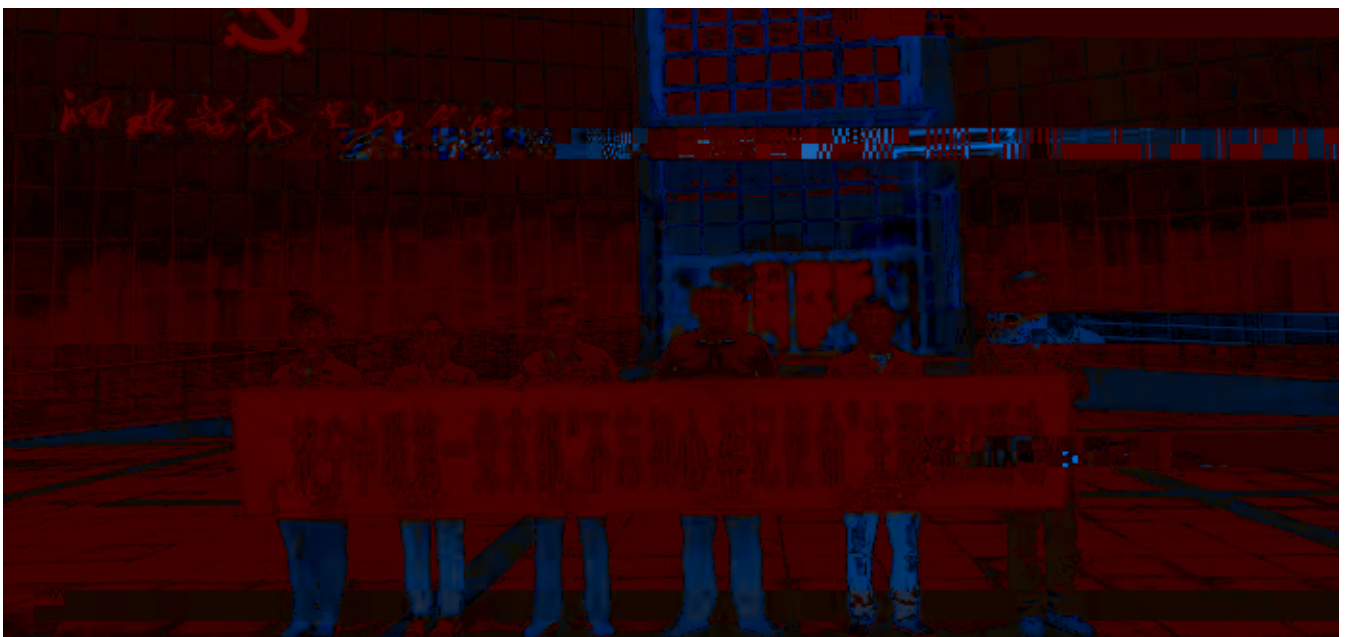
7@

“ ”

KPI

“ ”

KPI



2016 7

"
"
4



.....
"

"

2 1

2019

"

4

1.2

" "

2018 8

9

"

"

"

"

1

2019

2019 11 23

176
476

105
38
3

18

120

200

" "

" "

"

"

.....

"

"

"

"

23

"

"

"

"

20

2019

"

" "

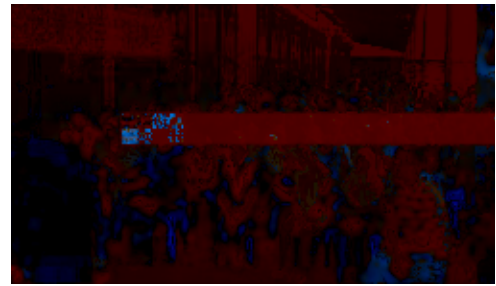
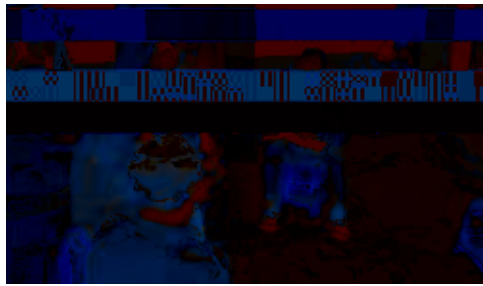
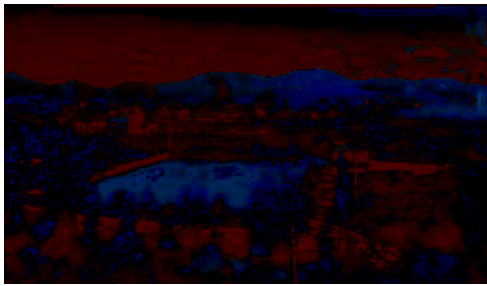
"

"

" "

"





"

;

"

5 13

277.8

1980

8.04

4045

99.16%

9

"

"

8 14

1960

(

6843

669

)

(

2588

)

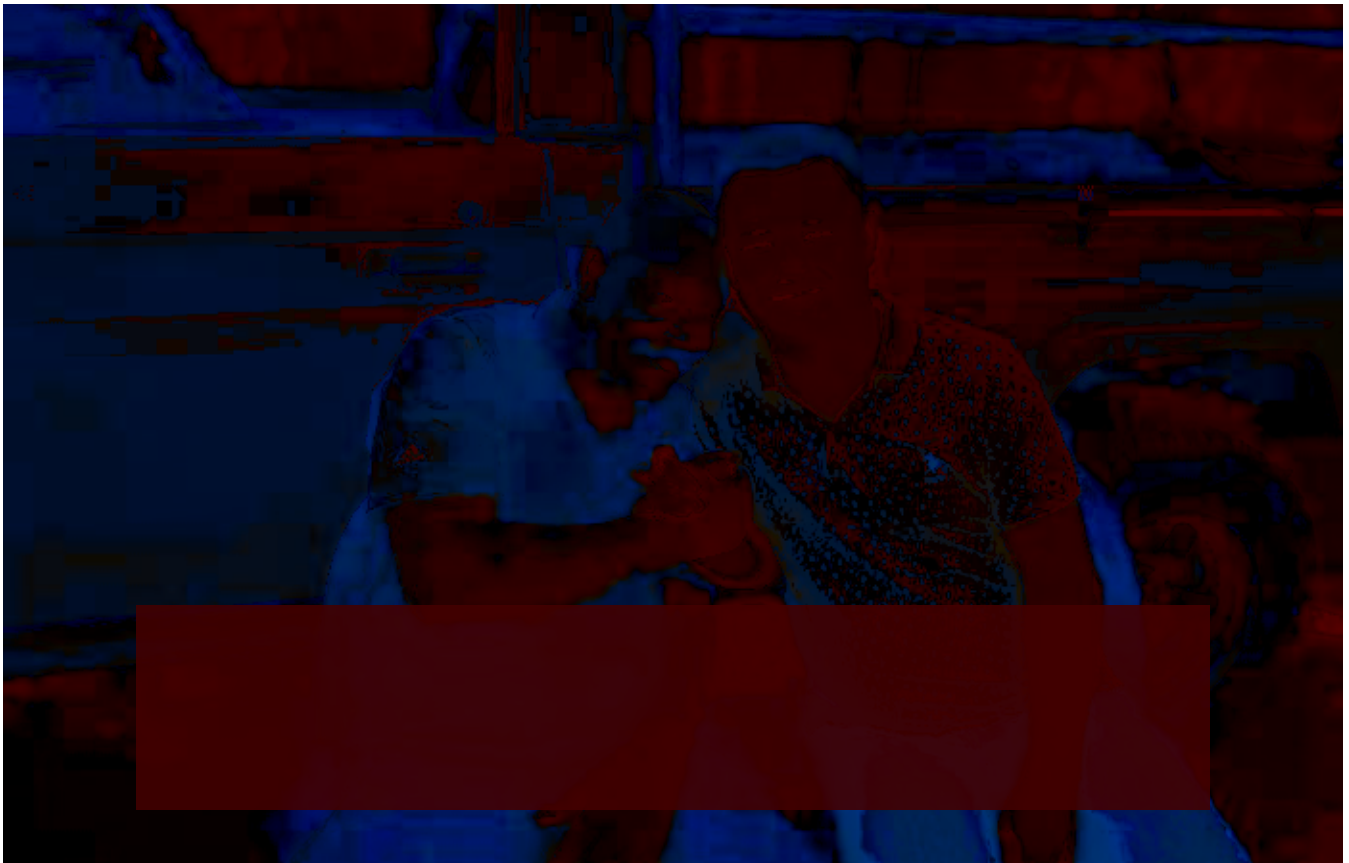
(

)

2019

55

“ ” 9.7
40
Ê



" Hello Mr.Wang....." 11 4

Mr.Chiyeya

12

20

2016 5

.....

— —

lodge

- GREAT EAST ROAD

2017 2

" MR.WANG

"

→

?

CAC

MPANDE

"

"

"

"

,

13

2017 9 11

15

500

"





5%

3

3

800
QC

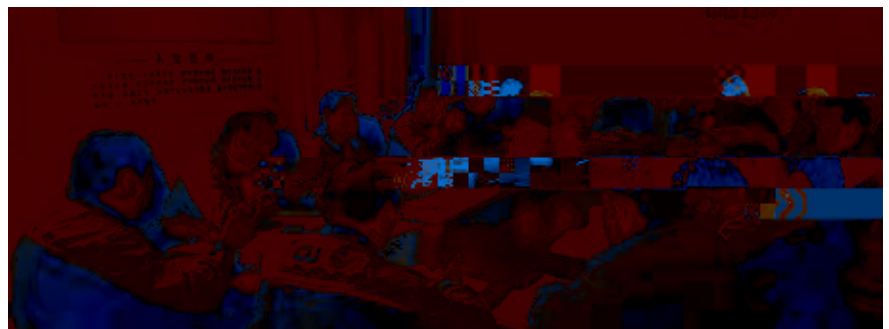
"

"

"

"

1 2





1960
 $\text{Cr}_3+\text{Al}_2\text{O}_3$
Franken

1961

.....

KDP

5G " "

X

5G " " 1- 3 15

" "

"

"

15- 20

20

5

5G

"

"

"

"



?

"

"

"

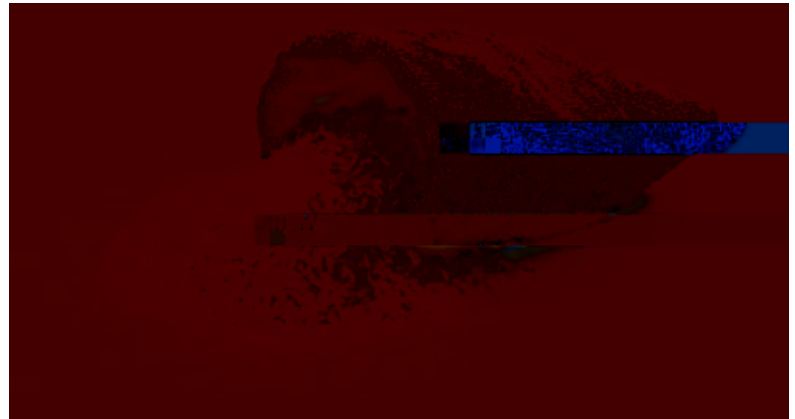
"



?
?
?

"

"



44

39

44

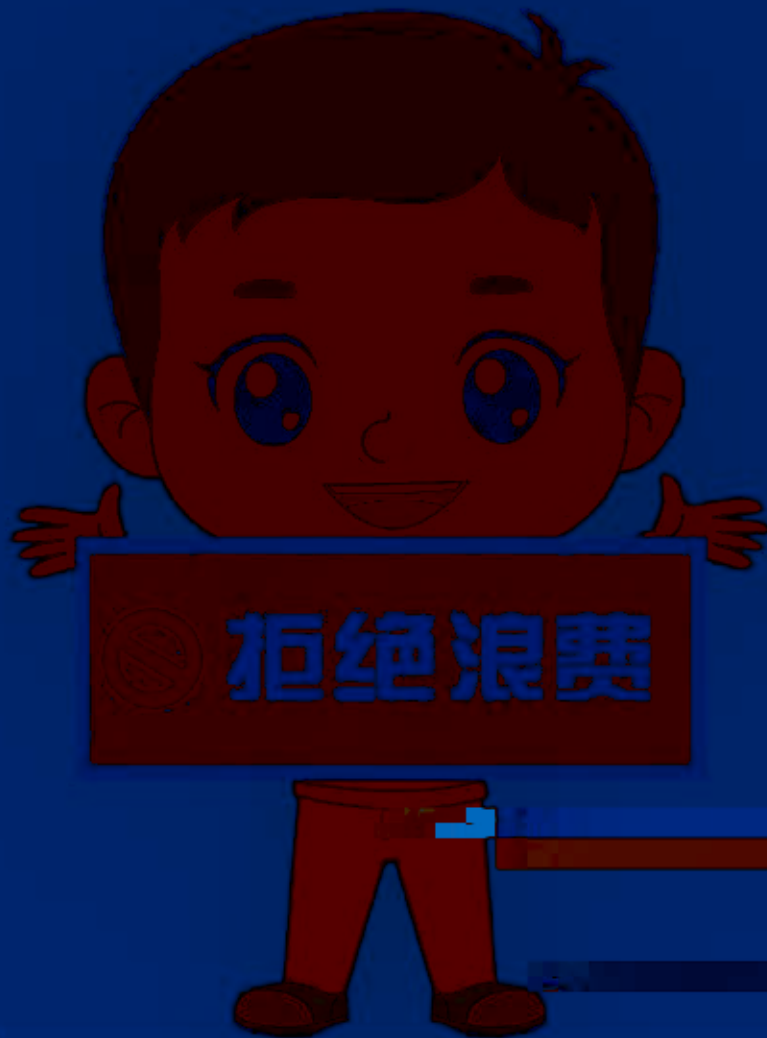
39

44

39

一粥一饭，当思来之不易

拒绝餐饮浪费 为节约代言



按需点餐 按量取食

珍惜粮食
拒绝浪费

